

Greater Manchester: Devolution and reform

Andrew Lightfoot
Deputy Head of Paid Service, GMCA

The Greater Manchester economy in context



2.7m people



1.14m jobs



93,000 businesses

Source: ONS

Source: ONS, GVA estimates 2012

GM ECONOMY, 2011

£48.2bn

BIGGER THAN

WALES
ECONOMY, 2011

£47.3bn

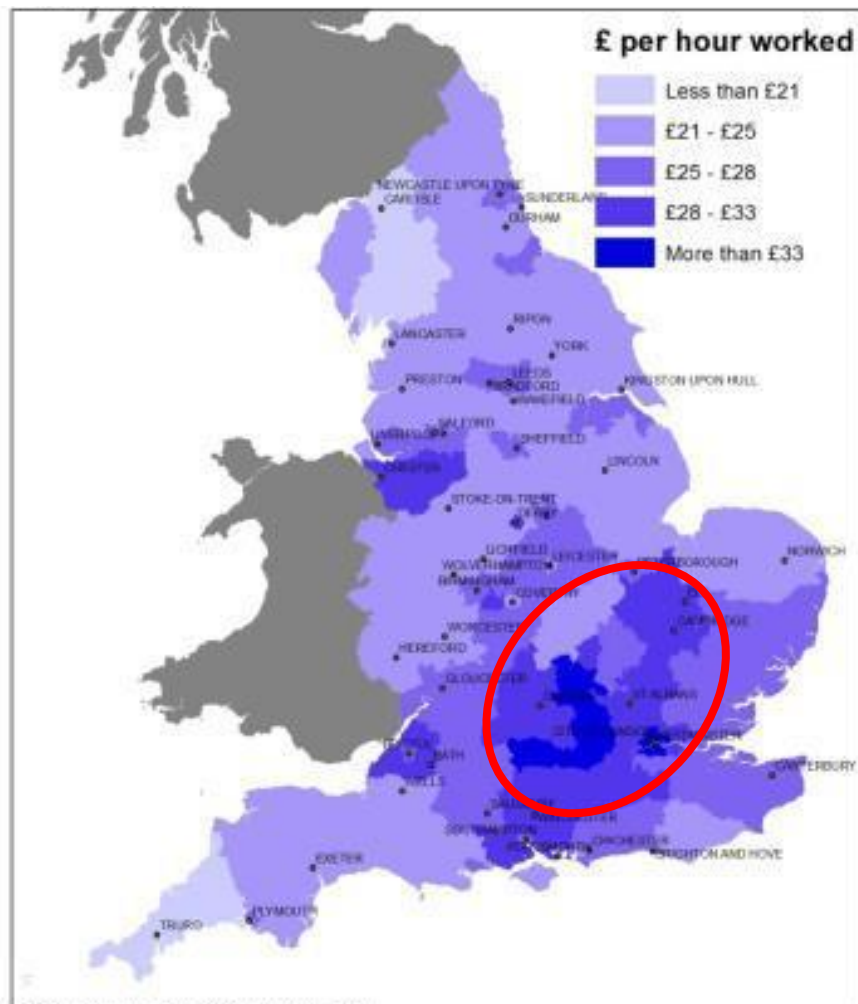
NORTH EAST
ECONOMY, 2011

£41.6bn

NORTHERN
IRELAND
ECONOMY, 2011

£29.9bn

Higher rates of UK productivity remain focused around London

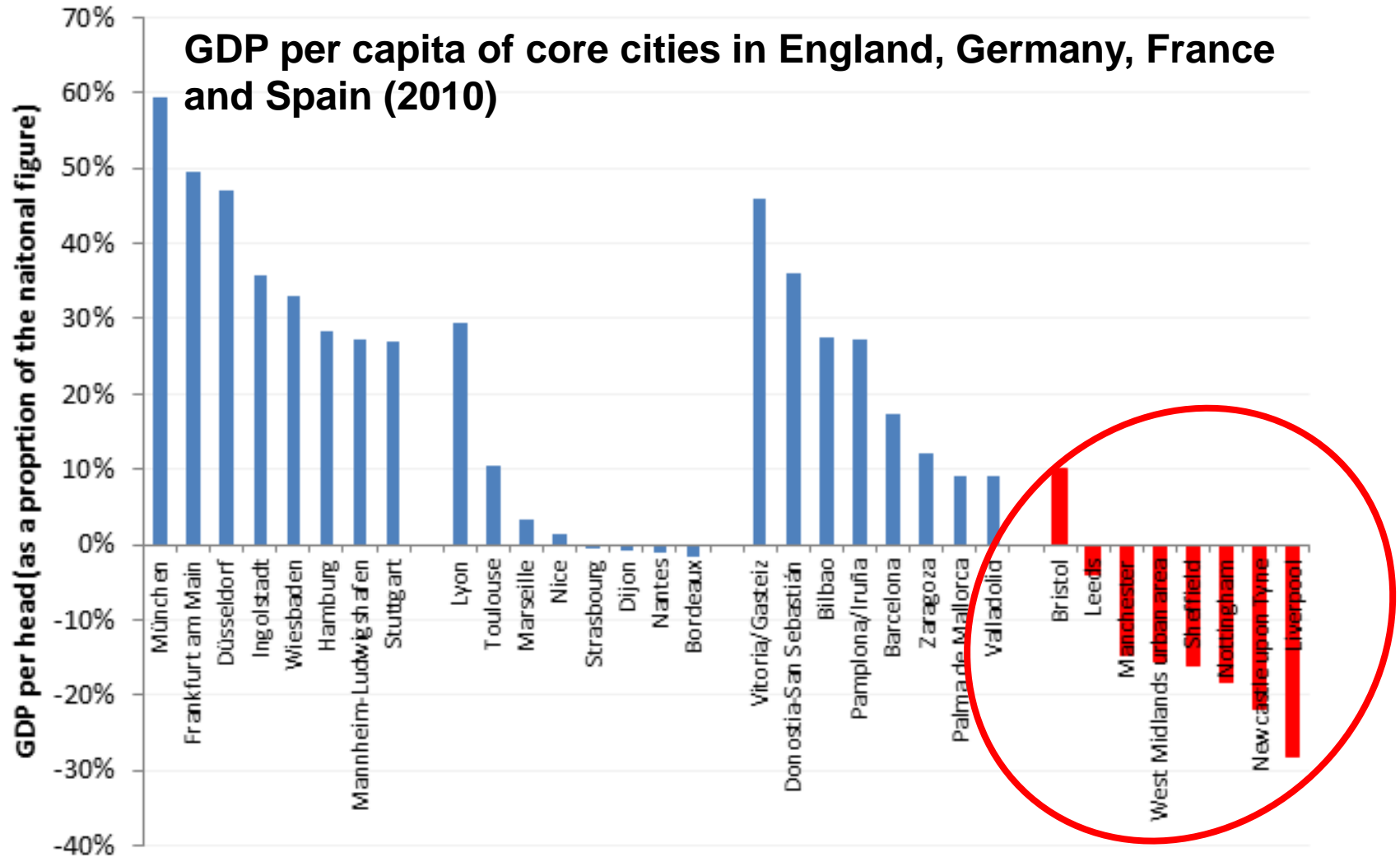


Produced by Local Growth Analysis,
Department for Business, Innovation and Skills

© Crown Copyright and database rights 0 12.525 50 Miles
Ordnance Survey

Data Sources
OS Boundary - Line
ONS Employment rate

Internationally, we see a different productivity picture



The GM economy is growing but challenges remain



£56 Billion GVA

Fastest growing LEP in the country



2.7 Million People

Growth of 170,000+ in the last decade



104,000 People Unemployed

7.8% (above UK average of 5.5%)



77.7 Male Life Expectancy

England average: 79.3



81.3 Female Life Expectancy

England average: 83.0

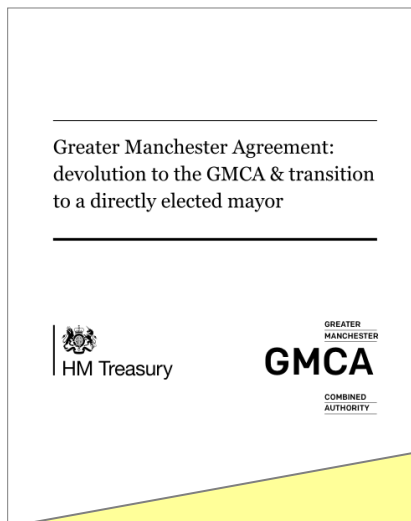


112,000

People on long-term sick and inactive

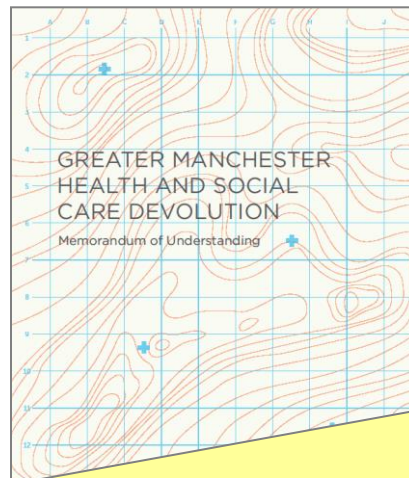


Devolution is helping us address these challenges



Deal 1 Signed 3 Nov 2014

New powers for the GMCA on condition of agreeing to an elected mayor for GM. Powers cover transport, business support, employment and skills support, spatial planning, housing investment, earnback and governance reforms



Deal 2 Signed 27 Feb 2015

Bringing together health & social care budgets – £6bn – to deliver better outcomes for GM

Followed up by agreement in late 2015 for a £450m Health and Social Care Transformation Fund

GM's deals align to the growth and reform ambitions of the Greater Manchester Strategy

Further devolution to the Greater Manchester Combined Authority and directly-elected Mayor



Deal 3
Agreed alongside the July 2015 Budget

Included fundamental review of service for children, creation of a Greater Manchester Land Commission

Further devolution to the Greater Manchester Combined Authority and directly-elected Mayor



Deal 4
Agreed Nov 2015

Alongside the Autumn Statement, following a GM submission to the SR GM agreed further transport devolution (including control of rail stations)

Further devolution to the Greater Manchester Combined Authority and directly-elected Mayor



Deal 5
Agreed March 2016

Agreement included establishment of GM Life Chances Fund, Criminal Justice Devolution, and piloting of 100% business rates retention

New governance arrangements are being put in place

GMCA

- 10 Leaders with portfolio responsibilities allocated by the Mayor
- Devolution of some new responsibilities has been possible without legislation and have passed to the GMCA. Others dependent on the implementation of the city region Mayoral model
- GMCA members and the Mayor will each have one vote on public service issues
- The directly elected Mayor required to consult the GMCA Cabinet on strategies and spending plans – which a two thirds majority can reject or amend

GM Elected Mayor

- Interim Mayor, as an 11th member of the CA, appointed June 2015
- Legislation to create the role of a directly elected Mayor passed through Parliament. First elections anticipated in 2017
- Chair of the GMCA and Cabinet
- Mayor required to consult the GMCA Cabinet on strategies and spending plans – which a two thirds majority can reject or amend
- Mayor will also take on powers of the PCC
- Mayor's power to levy 2% uplift on business rate, subject to LEP approval
- Mayor's spatial framework requires unanimous support of consent

Greater Manchester is 'Officially the most exciting place in the UK' (The Guardian, Feb 2015)

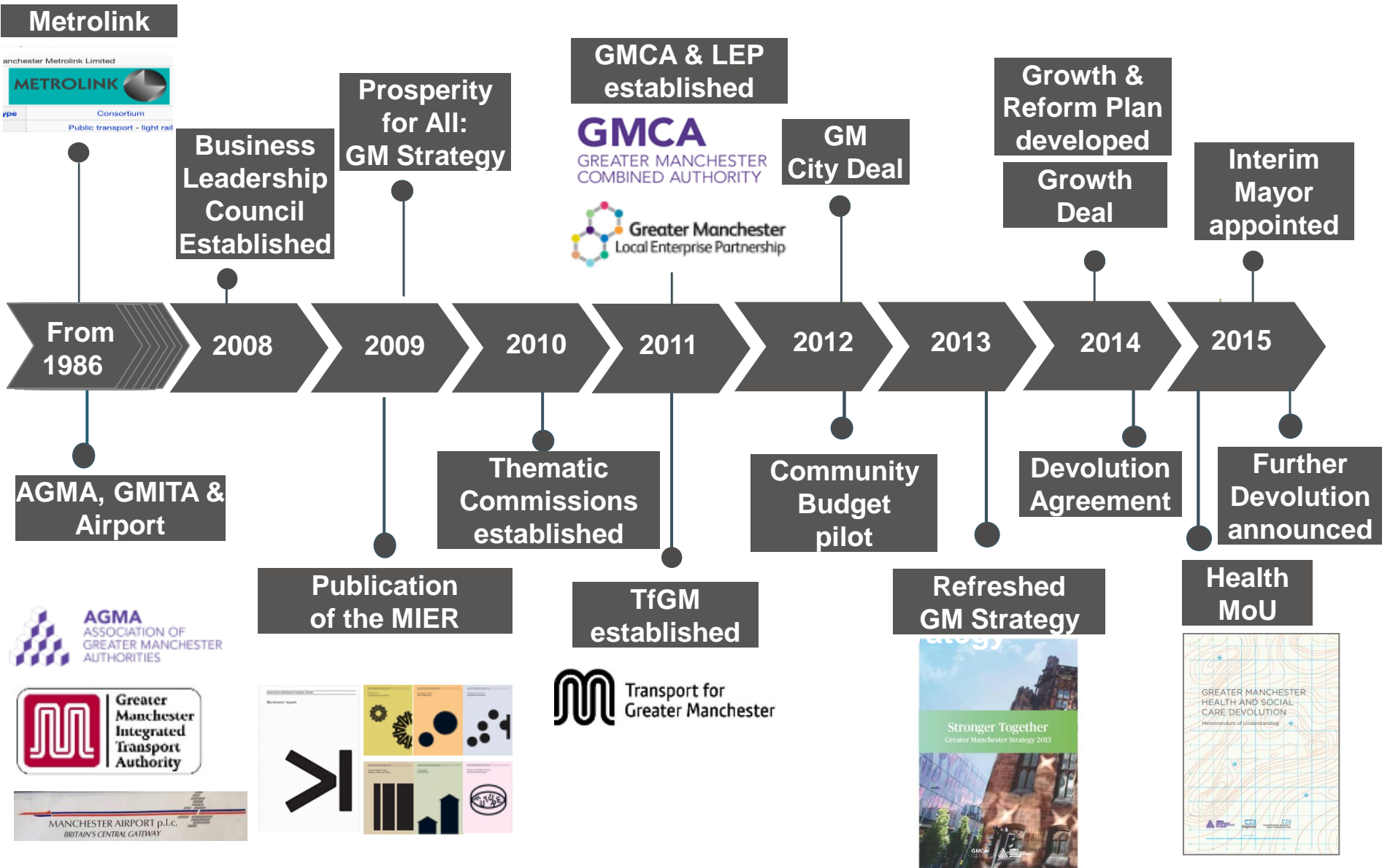
Greater Manchester can help cement Northern Powerhouse

GM to control £6bn NHS Budget

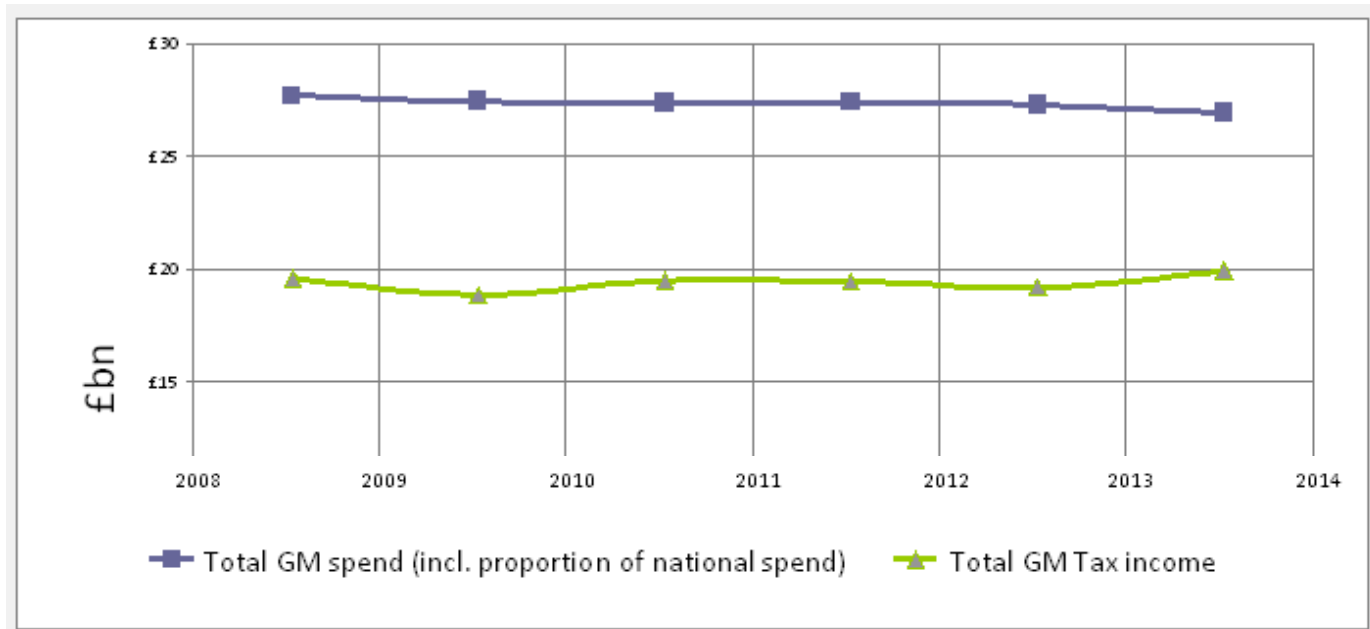
It's time to unleash the power of the North

The devolution revolution is taking hold

Devolution: part of our long history of collaboration

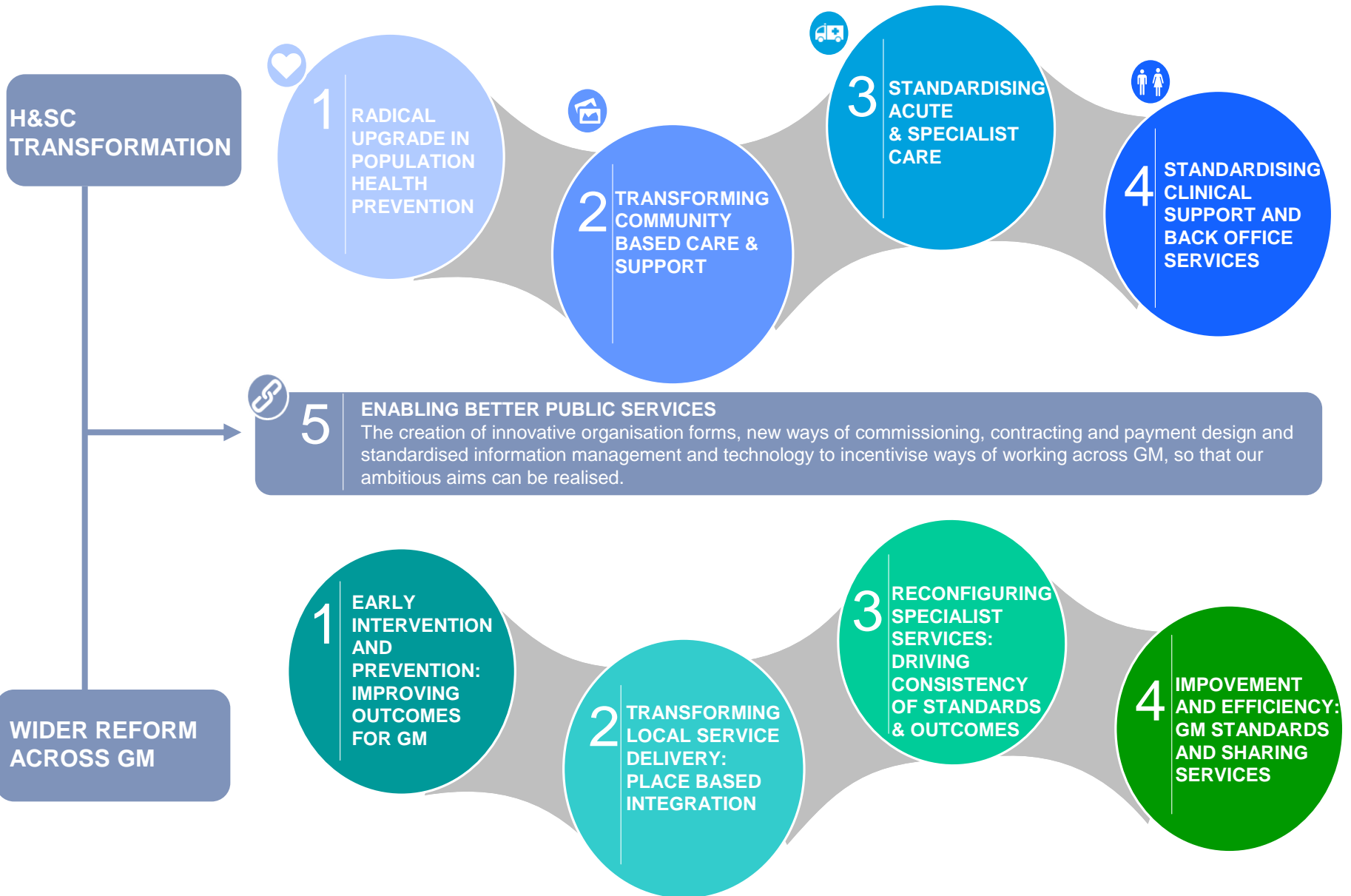


GM growth and reform ambition

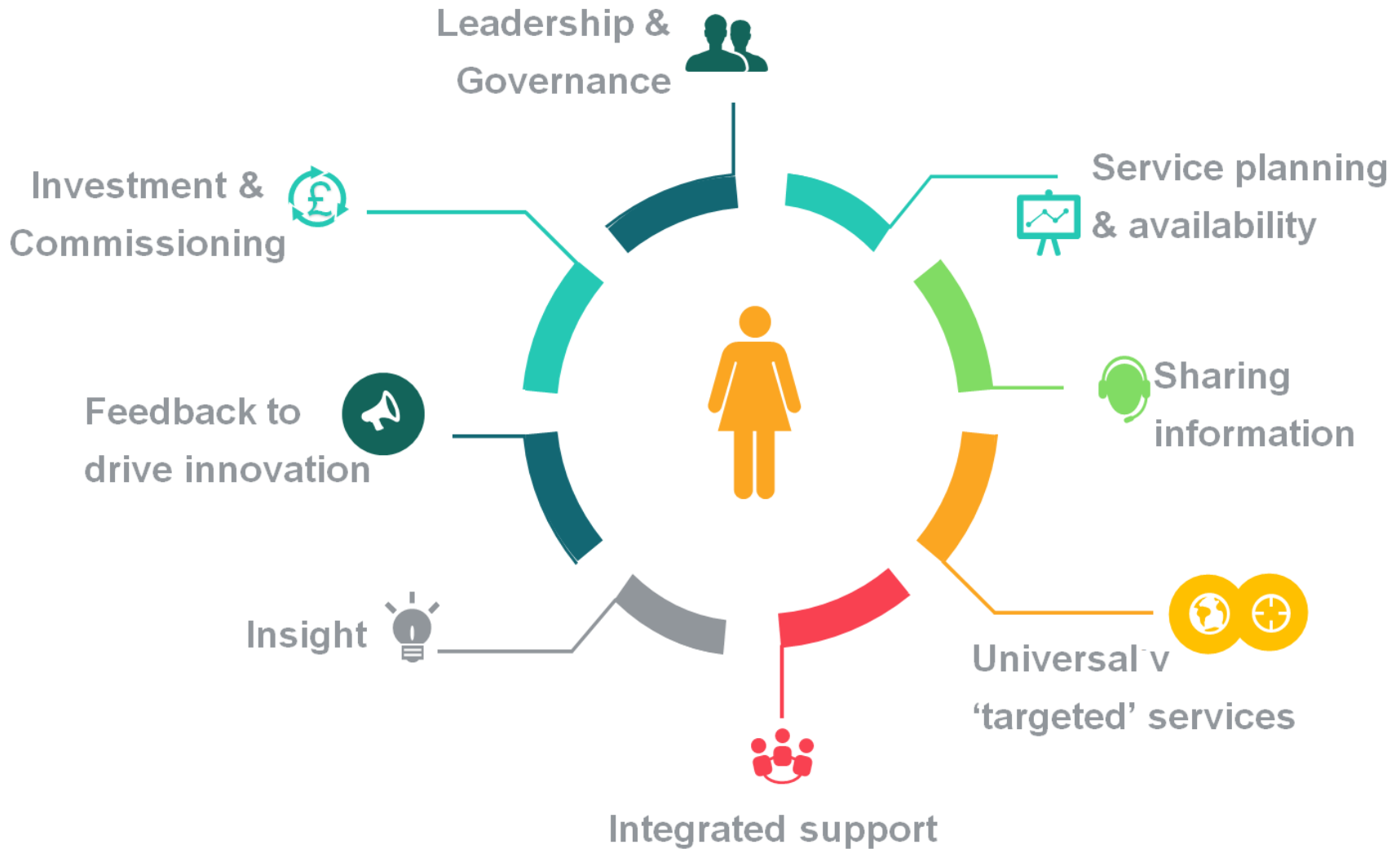


- We want to shift our position from being a **cost centre** to a **net contributor** to national public finances
- We are seeking greater control over the levers and resources available to the public sector, delivering the growth and reform that will support GM residents and businesses to thrive

We're collaborating in reform across sectors



We're focusing resources on early intervention, prevention and a citizen-centered approach to public services



Applying our approach in practice: current priorities

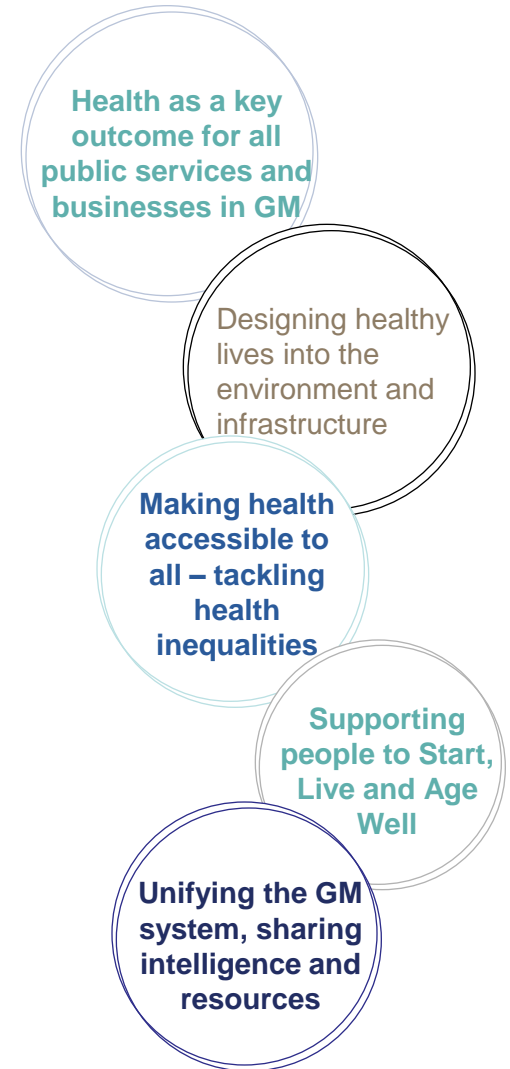
Services for Children



Adult Social Care



Public Health



GM Reform: Enabling better services

**Effective use of
information**

**Leadership and
workforce
development**

**Commissioning
for reform**

**Digital and
technologically
enabled reform**

**Integrated, place-
based delivery
models**

**Integrated
performance
management and
governance**

**Collaborative
investment**

**Building on local
assets**

Find out more

greatermanchester-ca.gov.uk



[@greatermcr](https://twitter.com/greatermcr)

GMCA

BOLTON
BURY

MANCHESTER
OLDHAM

ROCHDALE
SALFORD

STOCKPORT
TAMESIDE

TRAFFORD
WIGAN